

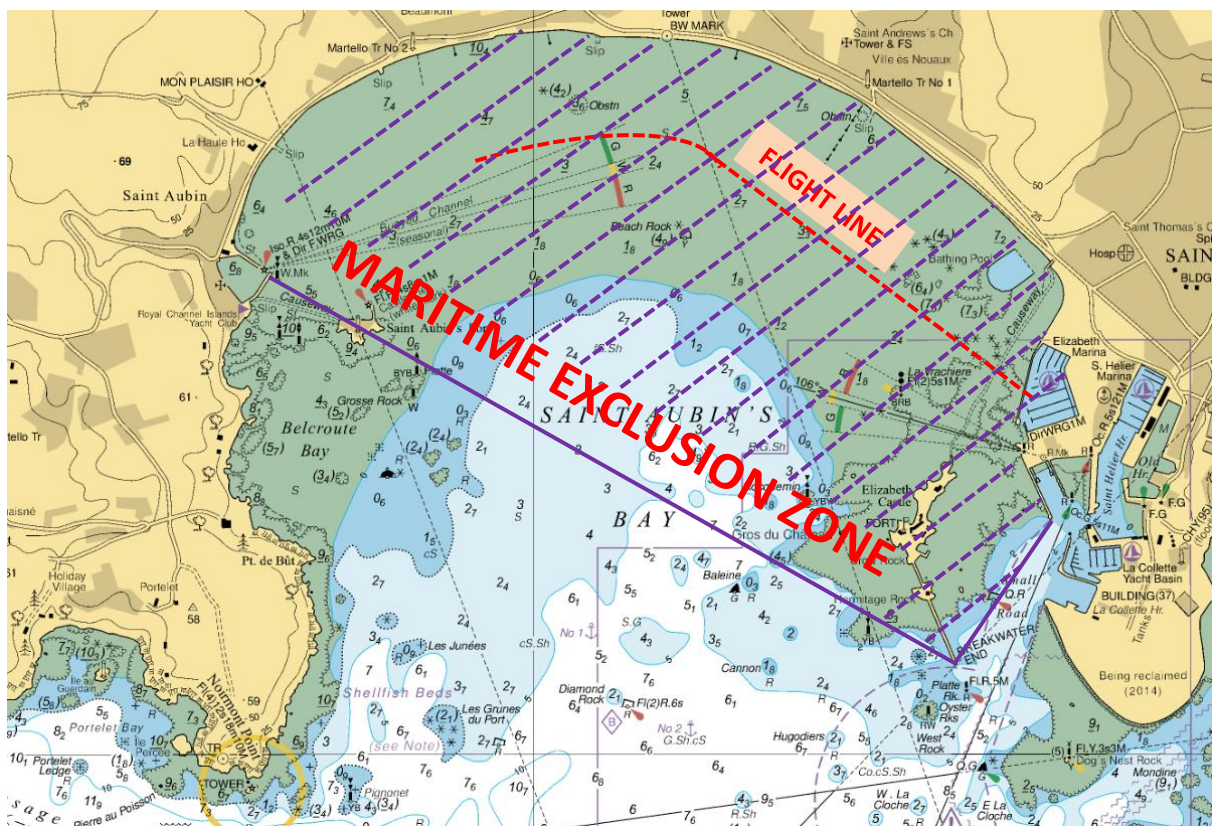


Notice to Mariners No 24 of 2019
Jersey South Coast – BA Chart 1137 & 3655

JERSEY INTERNATIONAL AIR DISPLAY
ST AUBIN'S BAY - EXCLUSION ZONE

WEDNESDAY 11th SEPTEMBER 2019; 13:00 – 17:00

THURSDAY 12th SEPTEMBER 2019; 12:45 – 17:00



The Harbour Master has declared the following area as a Maritime Exclusion Zone, from north of a line between the end of Elizabeth Harbour west wall, south end of Elizabeth Castle breakwater through St Aubin's Fort to the outer end of St Aubin's Harbour south arm.

Navigation and anchoring in this area is prohibited during the above times.

Mariners should note that during these times, sea access to and from Elizabeth Marine including the approach channel is prohibited. Access to and from St Aubin's Harbour and the outer moorings at St Aubin's is also closed. It should also be noted that the Elizabeth Marina West Wall will be closed to the general public during these times.

Ports of Jersey

St Peter, Jersey, JE1 1BY

T +44 (0)1534 447788 E enquiries@ports.je



PORTS OF JERSEY

YOUR ISLAND GATEWAY

This exclusion zone is issued as a Notice to Mariners and a Harbour Master's Special Direction under Regulation 3 (1) a) of Harbours (Jersey) Regulations 1962. Failure to comply with a Harbour Master's Direction is an offence, which carries a fine of up to £1,000.

This notice will self-cancel at 2359 on Thursday 12th September 2019.

A handwritten signature in black ink, appearing to read 'Bill Sadler'.

Captain Bill Sadler
Harbour Master, Jersey Harbours

09/09/19