

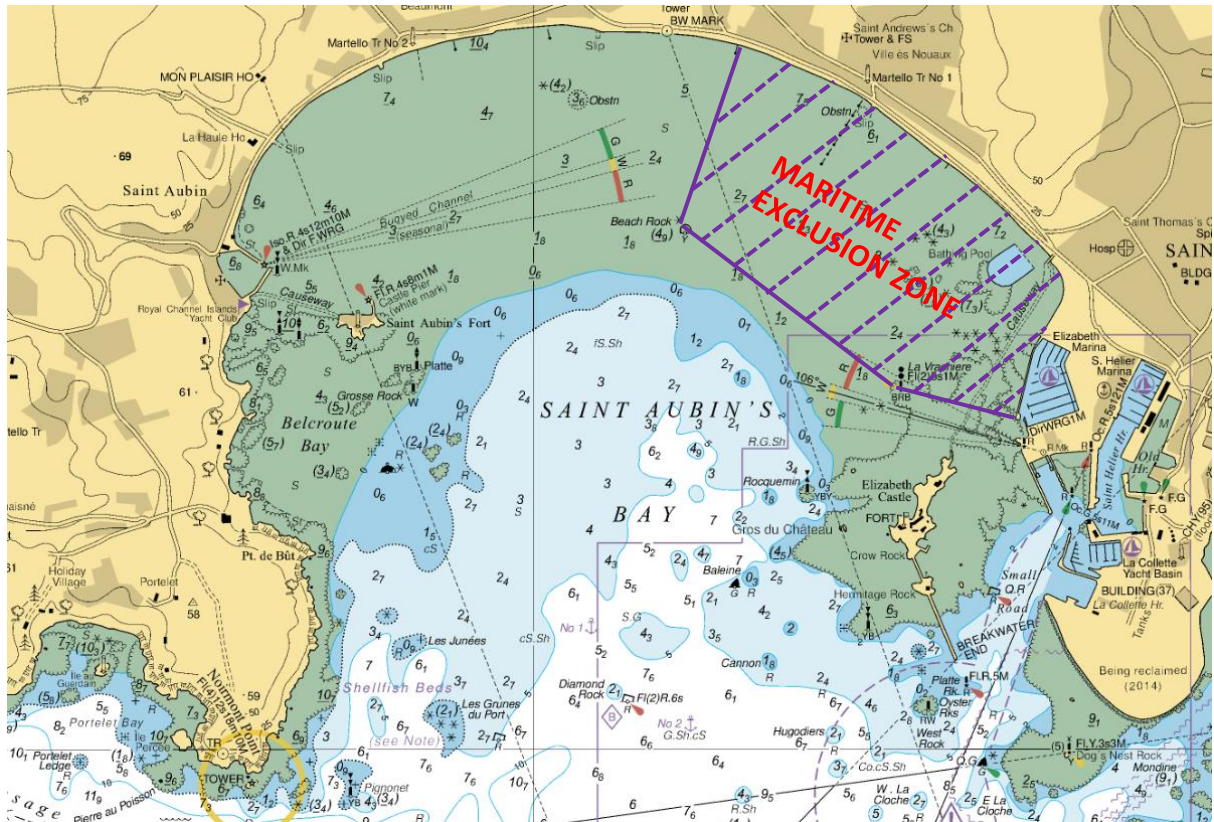


**Notice to Mariners No 20 of 2019**  
**Jersey South Coast – BA Chart 1137 & 3655**

**JERSEY BATTLE OF FLOWERS**  
**ST AUBIN'S BAY - EXCLUSION ZONE**

**THURSDAY 08<sup>th</sup> AUGUST 2019; 16:00 – 16:40**

**FRIDAY 09<sup>th</sup> AUGUST 2019; 22:00 – 23:00**



The Harbour Master has declared the following area as a Maritime Exclusion Zone, from north of a line between the end of Elizabeth Harbour west wall, La Vrachièrre beacon through Le Roc Aumont (Beach Rock) and east of a line between Le Roc Aumont (Beach Rock) through the sea wall abeam the “Old Station Café”.

Navigation and anchoring in this area is prohibited during the above times.

This exclusion zone is issued as a Notice to Mariners and a Harbour Master’s Special Direction under Regulation 3 (1) a) of Harbours (Jersey) Regulations 1962. Failure to comply with a Harbour Master’s Direction is an offence, which carries a fine of up to £1,000.

**Ports of Jersey**

St Peter, Jersey, JE1 1BY

T +44 (0)1534 447788 E enquiries@ports.je



**PORTS OF JERSEY**

YOUR ISLAND GATEWAY

This notice will remain in force until 23:00 on Friday 09<sup>th</sup> August 2019.

A handwritten signature in black ink, appearing to read 'Bill Sadler'.

Captain Bill Sadler  
Harbour Master, Jersey Harbours

31 July 2019