

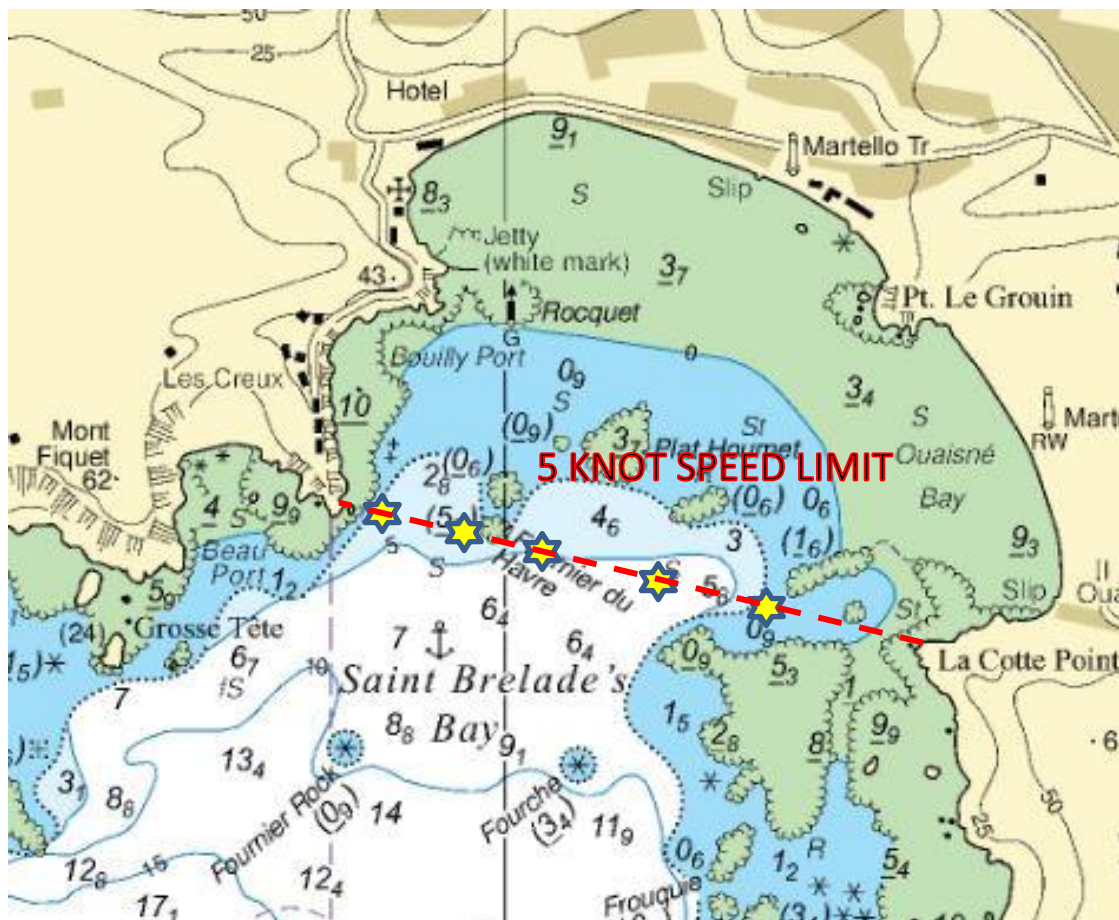
Notice to Mariners No 17 of 2019

Jersey South Coast – St Brelade’s Bay Chart BA 1137

Special Mark Buoys – 5 knots speed limits

Mariners are advised that a series of five special mark yellow bouys have been laid in the approximate positions in a line between Les Jeteuse Point and La Cotte Point. as shown on the chart below. Each large buoy is marked with 5 knots speed limit.

This speed limit comes into force from Friday 12 July 2019 to Monday 16 September 2019. Vessels operating north and east of this line of bouys must observe the 5 knot speed limit. Failure to do so is a breach of Harbour Master’s General Direction No.1.



Ports of Jersey

St Peter, Jersey, JE1 1BY

T +44 (0)1534 447788 E enquiries@ports.je



PORTS OF JERSEY

YOUR ISLAND GATEWAY

The above illustration shows the approximate positions and the area to which the 5 knot speed limit will apply.

A handwritten signature in black ink, appearing to read 'Bill Sadler'.

Captain Bill Sadler
Harbour Master, Jersey Harbours

04/07/19