



CHANNEL ISLANDS JERSEY – EAST COAST

DEPTHS IN METRES
 SCALE 1:25 000

Depths are in metres and are reduced to Chart Datum, which is approximately the level of Lowest Astronomical Tide.
Heights are in metres. Underlined figures are drying heights above Chart Datum; all other heights are above Mean High Water Springs.
Positions are referred to World Geodetic System 1984 Datum, (see SATELLITE-DERIVED POSITIONS note).

Navigational marks: IALA Maritime Buoyage System – Region A (Red to port).
Projection: Transverse Mercator.
Sources: The origin, scale, date and limits of the hydrographic information used to compile the chart are shown in the Source Diagram. The topography is derived chiefly from States of Jersey maps and aerial photography.

202 SATELLITE-DERIVED POSITIONS AND CHART ACCURACY
 Positions obtained from satellite navigation systems, such as GPS, are normally referred to WGS84 Datum. Such positions can be plotted directly on this chart. However, due to the age and quality of some of the source information, such positions may be more accurate than the charted detail.

INCOMPLETE SURVEY
 In the area indicated, the source material for the hydrographic data consists of an incomplete leadline survey with widely spaced lines of soundings. Uncharted shoals and rocks may exist.

VESSEL TRAFFIC SERVICE
 For procedures and working details of the Saint Helier Reporting System and for vessels approaching Gorey, see Admiralty List of Radio Signals.

SUBMARINE CABLES
 Mariners are advised not to anchor or trawl in the vicinity of submarine cables.

SHELLFISH BEDS
 Vessels should avoid grounding in areas of shellfish beds.

HIGH SPEED CRAFT
 High speed craft operate in the area of this chart. Mariners are advised to maintain a good lookout. Some high speed craft generate large waves, which can have a serious impact on small craft and their moorings close to the shoreline and on shallow off-lying banks.

Tidal Streams referred to HW at SAINT HELIER

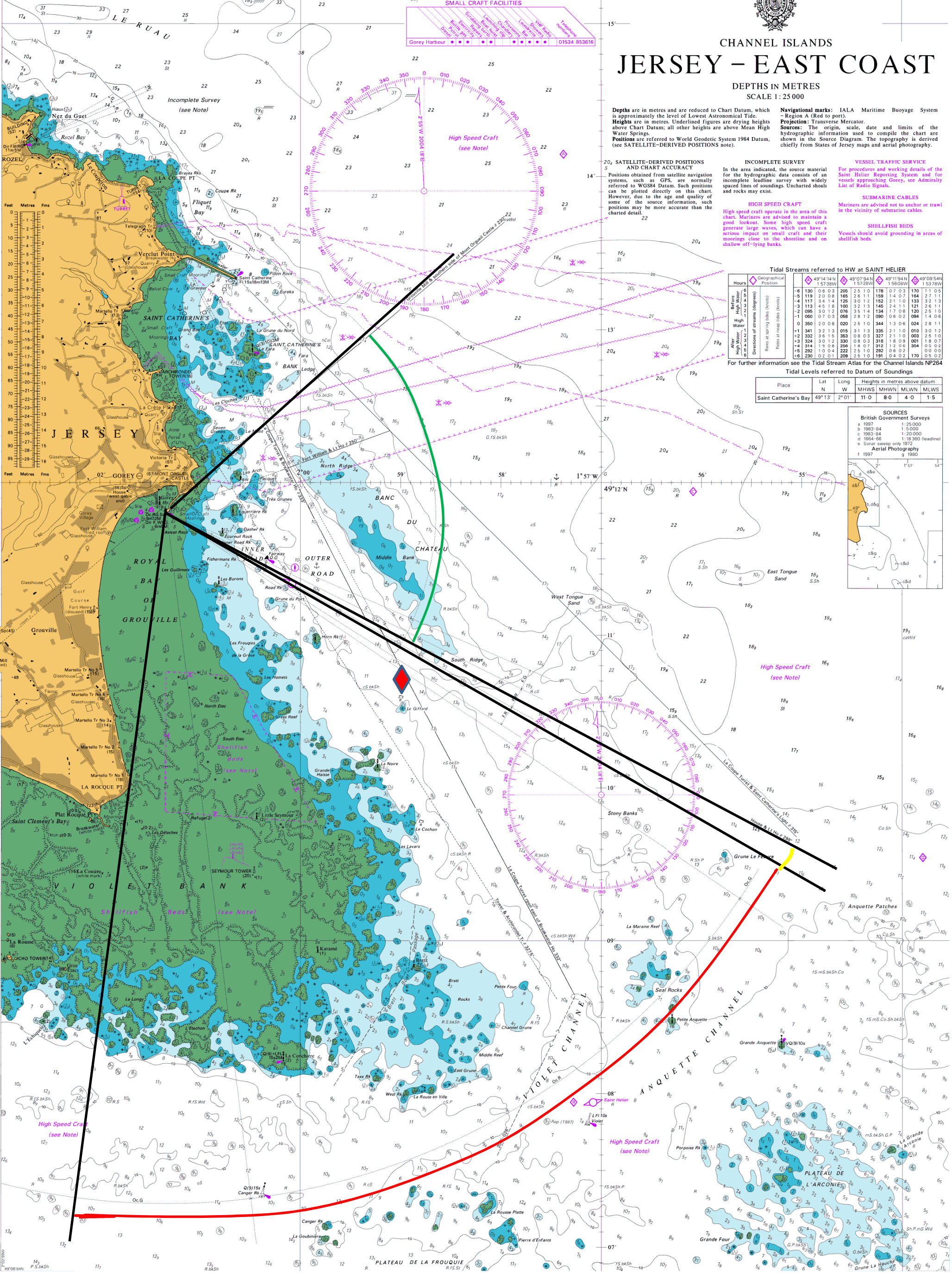
Hours	Geographical Position	49°14'14"N 1°57'38"W	49°07'94"N 1°57'28"W	49°11'94"N 1°56'08"W	49°09'54"N 1°53'78"W
Before High Water	Direction of streams (degrees)	-6 130 0 8 0 3	205 2 5 1 0	178 0 7 0 3	170 1 1 0 5
After High Water	Rate of running tides (knots)	-4 119 2 0 0 8	165 2 6 1 1	156 1 4 0 7	164 2 7 1 1
Before Low Water	Direction of streams (degrees)	-3 113 4 5 1 8	125 3 0 1 2	152 2 1 1 0	133 3 2 1 3
After Low Water	Rate of running tides (knots)	-2 108 3 0 1 2	078 3 5 1 4	134 1 7 0 8	120 2 5 1 0
High Water	Direction of streams (degrees)	-1 060 0 7 0 3	058 2 8 1 2	090 0 6 0 2	094 1 4 0 6
Low Water	Rate of running tides (knots)	0 350 2 0 0 8	020 2 5 1 0	344 1 3 0 6	024 2 8 1 1
Before High Water	Direction of streams (degrees)	-1 341 3 2 1 3	015 3 1 1 3	335 2 1 1 0	010 3 0 1 2
After High Water	Rate of running tides (knots)	+2 332 3 6 1 5	363 0 8 0 3	337 2 1 1 0	003 2 5 1 0
Before Low Water	Direction of streams (degrees)	+3 324 3 0 1 2	330 0 8 0 3	318 1 8 0 9	001 1 8 0 7
After Low Water	Rate of running tides (knots)	+4 314 1 9 0 8	259 1 8 0 7	312 1 2 0 6	354 0 5 0 2
High Water	Direction of streams (degrees)	+5 292 1 5 0 4	222 2 5 1 0	292 0 6 0 2	0 0 0 0
Low Water	Rate of running tides (knots)	+6 230 0 2 0 1	209 2 5 1 0	191 0 4 0 2	170 0 5 0 2

For further information see the Tidal Stream Atlas for the Channel Islands NP264

Tidal Levels referred to Datum of Soundings

Place	Lat	Long	MHW	MHWN	MLWN	MLWS
Saint Catherine's Bay	49°13'	2°01'	11.0	8.0	4.0	1.5

SOURCES
 British Government Surveys
 a 1997 1:25,000
 b 1983-84 1:50,000
 c 1983-84 1:20,000
 d 1984-85 1:12,500 (leadline)
 e Sonar sweep only 1972
 f Aerial Photography
 g 1980



Sectors Green from the Castle North East of the light through west to 296
 Then white to 299
 Then red through north to the land at La Rocque point.
 Also add red light on the Giffard buoy