



Consultation on The Change of the Light Visible Range of Demie des Pas and Gorey Pier Light Houses

The lights and control units at both Demie Des Pas and Gorey Pier lighthouses have reached the end of their life and are due to be changed. The opportunity will be taken to bring the units up to modern standards including using energy LED technology. This technology will make the colours brighter, the intensity stronger and the cut off between the lights sharper but will reduce the effective range as follows:

1. The range of the Demie Des Pas lights are 12 miles for the white and 9 miles for the red. The range of the new red and white lights would be 8 miles.
2. The Gorey Pier head light is presently 12 miles for the red, white and green. The range of all three colours would be 8 miles.

An initial Navigation Risk assessment supports these reductions and comment is sought from all those who navigate in Jersey's waters and in particular those who navigate in the vicinity of the Demie and Gorey to assist in final assessment and decision-making. A review of comments will be undertaken by a Navigation Advisory Panel prior to any changes and a full review of comments made during this consultation will be published on the Ports of Jersey website.

Attached to this document are diagrams that indicate the nominal coverage of the proposed new lights.

Comments are to be directed to the Ports of Jersey Marine Operations Manager using e-mail peter.lawrence@ports.je or in writing to the address as above for the attention of Marine Operations Manager.

This consultation will close 15th April 2016.

Captain P J A Buckley
Harbourmaster, Jersey Harbours

15th March 2016



Consultation List

- Published on Ports of Jersey web-site
- Circulated to all subscribers of the Ports of Jersey Mail2U
- Shipping companies on liner services operating vessels to Jersey with St Helier PEC certificates on board
 - Condor Ferries
 - Channel Seaways
 - Channel Island Ferries
 - Manche Iles
- Boat owner associations
- Yacht clubs
- Jersey fishermen's association
- RNLI
- Consultation published as a Notice to Mariners

Chart indicating the nominal coverage of an 8-mile Demie Des Pas light

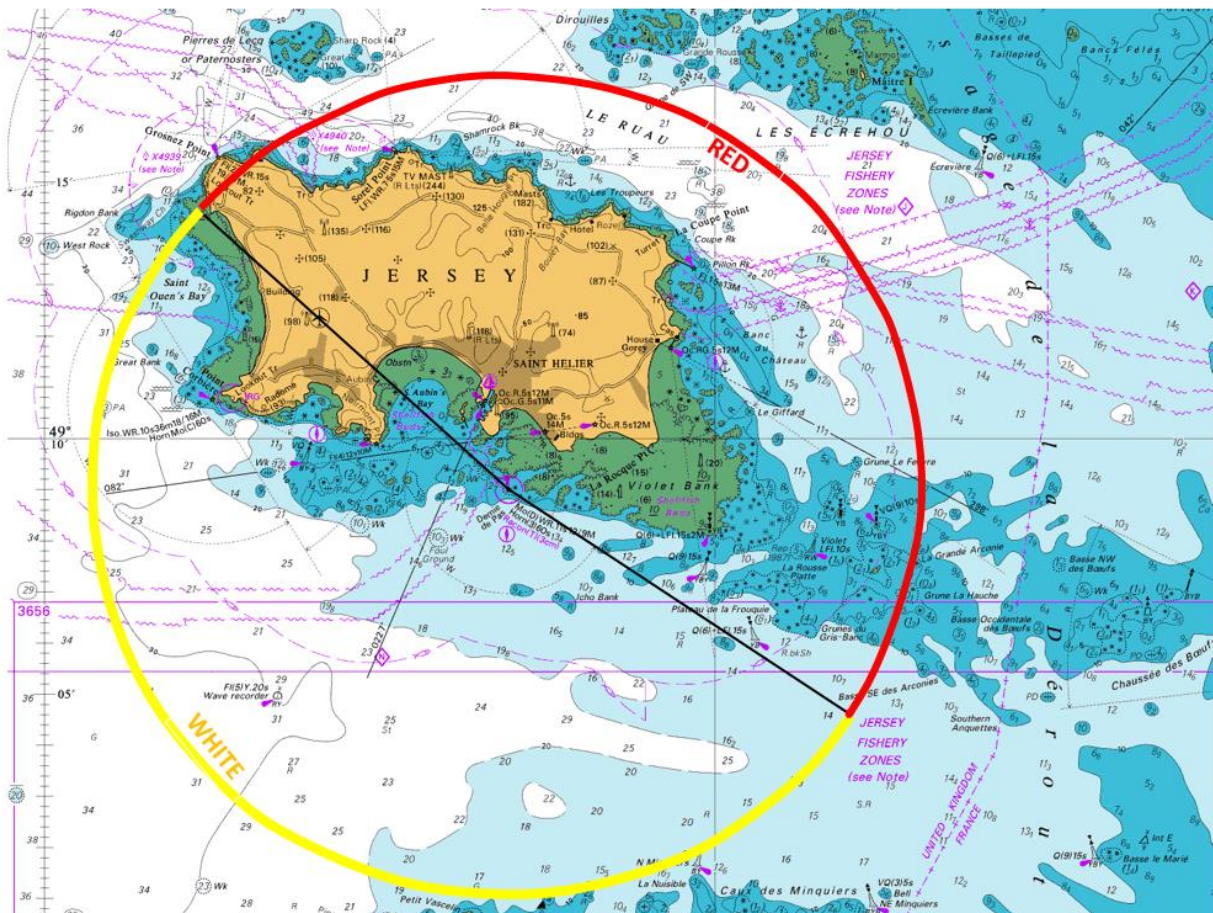




Chart indicating the nominal coverage of an 8-mile Gorey Pier head light

