

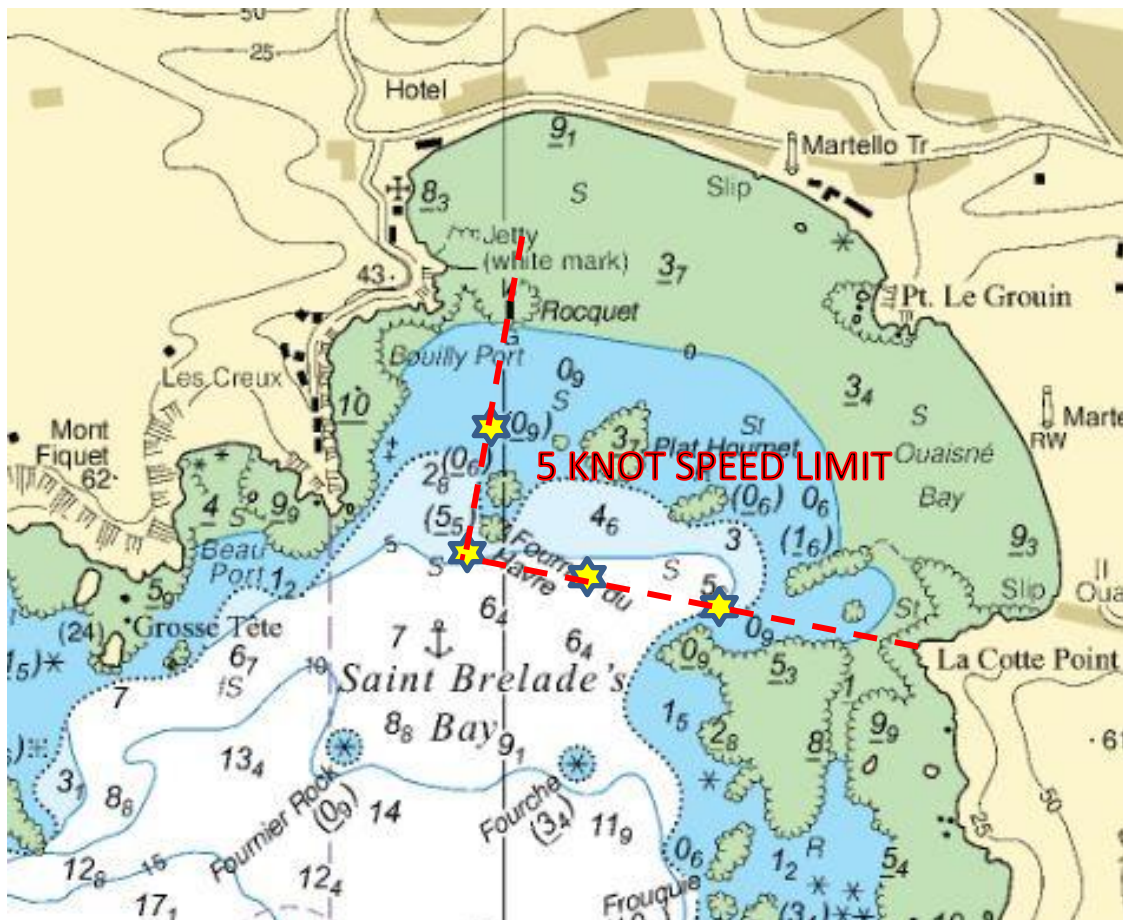
## Notice to Mariners № 12 of 2018

### Jersey South Coast – St Brelade’s Bay Chart BA 1137

#### Special Mark Buoys – 5 knots speed limits

Mariners are advised that a series of four special mark yellow bouys have been laid in the approximate positions as shown on the chart below. Each large buoy is marked with 5 knot speed limit.

This speed limit comes into force from Thursday 12 July 2018 until Monday 17 September 2018. Vessels operating north and east of this line of bouys must observe the 5 knot speed limit. Failure to do so is a breach of Harbour Master’s General Direction No.1.





The buoys are lain in the following positions:

- No.1 49° 10.62'N 002°11.69'W
- No.2 49° 10.62'N 002°11.85'W
- No.3 49° 10.66'N 002°12.03'W
- No.4 49° 10.80'N 002°12.08'W

The above illustration shows the approximate positions and the area to which the 5 knot speed limit will apply.



Captain Bill Sadler  
Harbour Master, Jersey Harbours

06/07/18