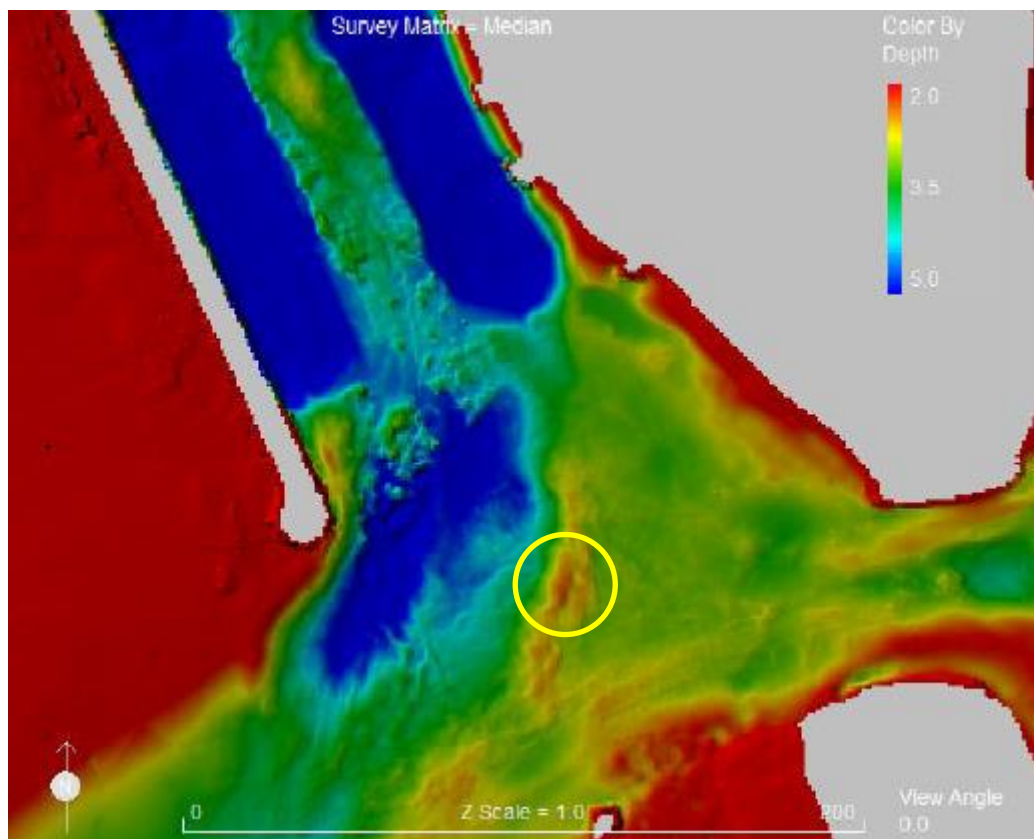


Notice to Mariners № 05 of 2019

Jersey South Coast – BA Charts 3278

Change of depths in turning area of Elizabeth Harbour

Mariners are advised that, following a recent survey, the depths in the turning area of Elizabeth Harbour has been reduced to 2.17m below Chart Datum, rather than the charted depth of 2.4m



Vessels manoeuvring at low water conditions should make allowance for this reduction in depth.

This notice will remain in force until cancelled.



Captain William Sadler
Harbour Master, Jersey Harbours

13/03/19