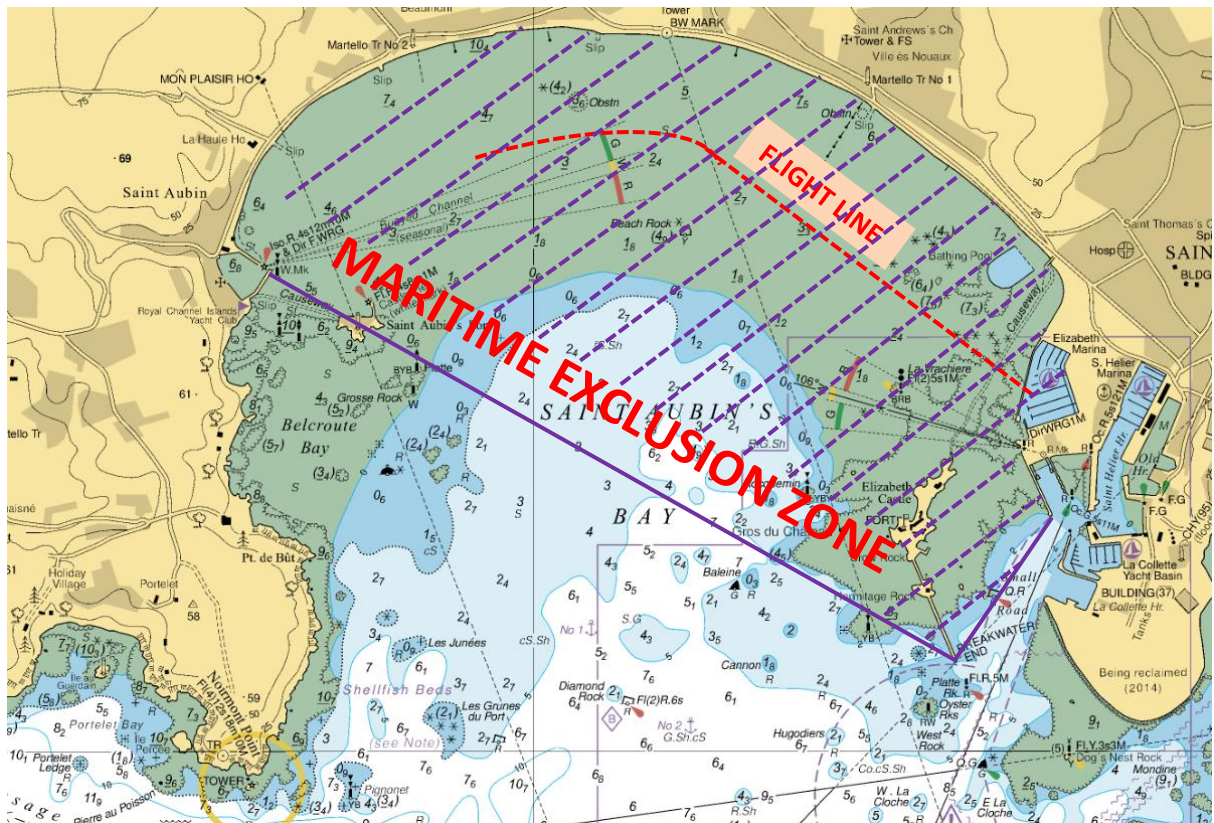




Notice to Mariners No 19 of 2018
Jersey South Coast – BA Chart 1137 & 3655

Jersey international air display
St Aubin's Bay - Exclusion Zone

Wednesday 12 September 2018; 13:00 – 17:00
Thursday 13 September 2018; 09:00 – 12:00
Thursday 13 September 2018; 12:30 – 17:00



The Harbour Master has declared the following area as a Maritime Exclusion Zone, from north of a line between the end of Elizabeth Harbour west wall, south end of Elizabeth Castle breakwater through St Aubin's Fort to the outer end of St Aubin's Harbour south arm.

Navigation and anchoring in this area is prohibited during the above times.

Mariners should note that during these times, sea access to and from Elizabeth Marine including the approach channel is prohibited. Access to and from St Aubin's Harbour and the outer moorings at St Aubin's is also closed. It should also be noted that the Elizabeth Marina West Wall will be closed to the general public during these times.



This exclusion zone is issued as a Notice to Mariners and a Harbour Master's Special Direction under Regulation 3 (1) a) of Harbours (Jersey) Regulations 1962. Failure to comply with a Harbour Master's Direction is an offence, which carries a fine of up to £500.

Due to low visibility conditions forecast for the practice session on Wednesday afternoon, some aircraft may not be able to validate to take part in the display. Therefore, a further practice session is scheduled for Thursday Morning as listed above. The same exclusion zone is in place for this time.

This notice will remain in force until 1800 on Thursday 13 September 2018.

A handwritten signature in black ink, appearing to read 'Bill Sadler'.

Captain Bill Sadler
Harbour Master, Jersey Harbours

12/09/18