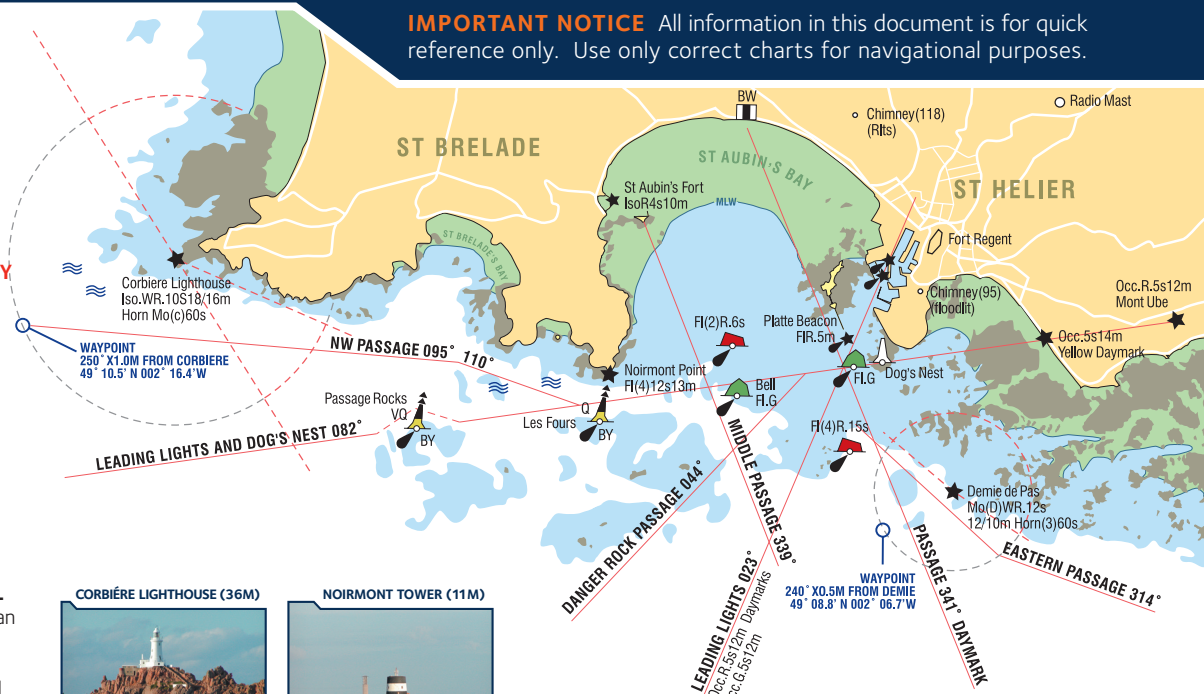


ST HELIER APPROACHES

INTERNATIONAL PORT TRAFFIC SIGNALS

- **STOP**
● Vessels shall not proceed.
● Fixed.
- **STOP SERIOUS EMERGENCY**
● All vessels to stop.
● Await instructions.
● Flashing red lights.
- **GO**
● Vessels may proceed.
● One-Way traffic. Fixed.
- **GO**
● Vessels may proceed.
○ Two-Way traffic. Fixed.
- **STOP EXEMPTION SIGNAL**
 Power Driven Vessels less than 25m may proceed contrary to the main signal. Keep to the Starboard side. Additional Fixed or Occulting.



CORBIÈRE LIGHTHOUSE (36M)



NOIRMONT TOWER (11M)



LA PLATTE BEACON (8M)



THE DOG'S NEST



DEMIE DE PAS (11M)



IMPORTANT NOTICE All information in this document is for quick reference only. Use only correct charts for navigational purposes.